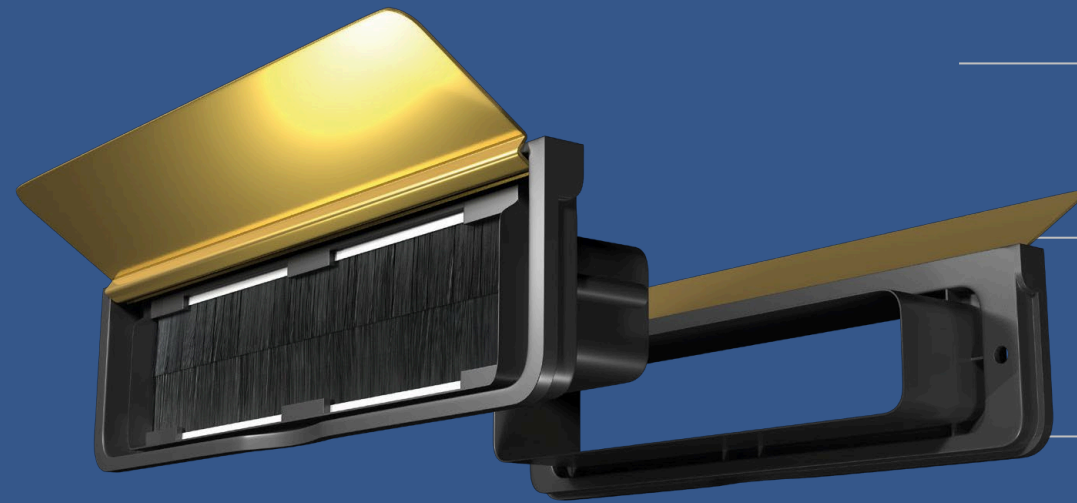


DOORMASTER 12 inch Letterplate



Comes in 2 sleeve thicknesses – 20-40mm for uPVC doors and 40-80mm for wooden and composite doors

Enclosed, round flap set against a shallower frame - gives a less intrusive but sleek feel to the door or frame

Modern and contemporary looking

Has a central sleeve meaning that it can fit in waste (mid) rails

What are the benefits?

- 1 - Having brushes on the front of the door acts as a visual deterrent to vandals. As the internal cavity is not easily accessible, it makes it a lot harder to put lit fireworks etc. into the cavity.
- 2 - It is easier for postmen to navigate letters through the brushes, so you won't end up receiving crinkled letters anymore.
- 3 - The brushes stop draughts at the point of entry, making the letterplate draught-proof.

Another great feature of all UAP letterplates is that each letterplate flap can open to 180 degrees, meaning that it should not snap, and making letterplate flaps snapping off a thing of the past. The ultra-flexible springs means that they can withstand thousands of openings without breaking, making them last even longer. Also, an internal water seal also prevents water getting into the door or panel, which stops letters getting wet as they are posted through, and also helps to prevent the flaps from pitting or rusting.

What is the UAP 12 Inch DOORMASTER Letterplate?

The UAP 300mm 12 inch DOORMASTER letterplate is ideal if you are looking for a more modern and contemporary letterplate. The DOORMASTER letterplate range consists of an enclosed, rounded flap set against a shallower frame, giving a less intrusive but sleek feel to the door or frame.

Matt finished plastic frame conceals any scratches that may be caused by screwdrivers during installation

Blind bolts to the exterior of the letterplate prevents the outer frame being unscrewed from the door externally

Ultra-flexible springs can withstand the letterbox flap opening thousands of times without breaking

Conforms to many standards and testing requirements including BS EN 13724

Finish	20-40mm Door Opening	40-80mm Door Opening	Plastic Frame Colour	Flap Material Construction	Coating Guarantee
Gold Anodised	DMB1224G	DMB1248G	Black	Aluminium	5 Years Inland
Silver Anodised	DMB1224SA	DMB1248S	Black	Aluminium	5 Years Inland
Black Powder Coat	DMB1224B	DMB1248B	Black	Aluminium	5 Years Inland
White Powder Coat	DMB1224W	DMB1248W	Black	Aluminium	5 Years Inland
Polished Silver	DMB1224PS	DMB1248PS	Black	Aluminium	5 Years Inland
Silver Anodised	–	DMS1248S	Silver	Aluminium	5 Years Inland
Gold Anodised	–	DMG1248PG	Gold	Aluminium	5 Years Inland
Polished Silver	--	DMS1248PS	Silver	Aluminium	5 Years Inland

What else is included?

Each DOORMASTER letterplate has a central sleeve, meaning that it can fit in waste (mid) rails. The cavity dimensions also mean that you do not need to change CNC machines routing dimensions in order change over to this modern letterbox. The cavity hole dimension to drill into your doors in order to fit the 12 inch DOORMASTER letterplate is 258mm x 42mm.

On the UAP DOORMASTER letterplate there are many features that are not found on standard letterboxes. This includes the trademarked Anti-Vandal facility. Each year house fires are started by vandals putting fireworks through letterboxes. Each UAP letterplate has the brushes outward facing (a feature no other letterplate in the industry has).

Distance Between Screw Holes	280mm
Letterplate Length	300mm
Letterplate Height	65mm
Frame Material	Plastic
Cavity Hole Size	258mm x 42mm

