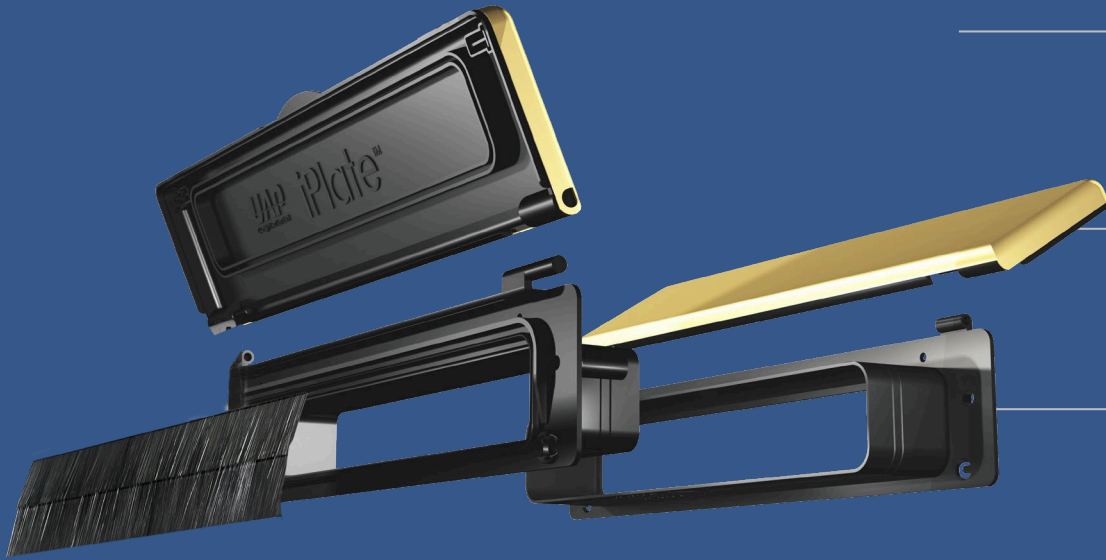


UAP TS008 12 Inch iPlate External Letterplate



Has a sacrificial cut line to easily cut the letterplate down to 24mm or 28mm for uPVC door panels

It makes any front door more attractive thanks to its unique frameless design

Internally sprung with UAP's ultra-reliable torsion bar, to give that extra feel of positive closure

Conforms to many standards and testing requirements

What is the UAP 10 Inch iPLATE?

The 12 inch iPlate Letterplate, considered the most innovative letterplate in the world, is the perfect addition to any front door. With so many options available on the market, only few match the remarkable features of the iPlate. The iPlate makes any front door more attractive thanks to its unique frameless design. It offers a corrosion proof construction and it is available in a range of finishes, making it the perfect choice for any house.



Outward-facing brushes also means better draught-excluding and makes it easier to post letters through

Traditional brushes in the front of the aperture

Outward-facing brushes discourage vandals from placing unwanted items into the cavity

Can fit door thicknesses between 24-80mm



Finish	24-80mm Door Profiles	Material Construction	Coating Guarantee
Black	TS008-EXT-IPLATE-BLACK	Aluminium	5 Years Colour Fast
White	TS008-EXT-IPLATE-WHITE	Aluminium	5 Years Colour Fast
Granite	TS008-EXT-IPLATE-GRANITE	Aluminium	5 Years Colour Fast
Mirror Polished	TS008-EXT-IPLATE-MPSS-NANOCOAST	Stainless Steel	LIFETIME
PVD Gold	TS008-EXT-IPLATE-PVDG-NANOCOAST	Stainless Steel	LIFETIME
Satin Stainless	TS008-EXT-IPLATE-SSS-NANOCOAST	Stainless Steel	LIFETIME

What else is included?

The iPlate letterplate is jam packed with features that will keep intruders out and vandals away while keeping the post safe:

Ultra-Reliable Torsion Bar: Internally sprung with UAP's ultra-reliable torsion bar, to give that extra feel of positive closure.

Draught-Excluding Brushes: Like the brushes of the rest of the UAP Letterplate range, they are outward-facing which helps keep vandals from placing unwanted objects through the opening, makes posting easier (no more crinkled letters!) and it even makes the letterplate draught-excluding.

Slimmest Back to Front Dimensions: the iPlate suits 40mm to 80 mm doors and profile and it also features sacrificial cut lines for 24 mm and 28 mm uPVC door panels.



Distance Between Screw Holes	280mm
Letterplate Length	310mm
Letterplate Height	75mm
Letterplate Width	24-80mm
Cavity Hole Size	257mm x 42mm

